

## Special Instructions for the Computer Novice

How to download and open the [BRI\\_Snet.com](http://BRI_Snet.com) file:

FREE SOFTWARE | FREE SUPERTOTE | FREE HANDICAPPER'S EDGE | FREE BLOODSTOCK JOURNAL | STABLE ALERT

**brisnet.com**   Wager Now

**Bloodstock Research Information Services**

SELECTIONS, PROGRAMS & PPS | RESULTS & CHARTS | PEDIGREE & LIFETIME STARTS | THE WIZARD | HOME

Left Click here

User: Scroll Down to this section near the bottom...

[Australian QwikTip Sheet](#) Leading Australian tipster Gary Crispe provides his exclusive Qwik Tips. Includes both A & B Australian race cards. Requires FREE [Adobe Acrobat Reader](#).

**Software Data Files**

[DRF Data Files \(single\)](#) Comma-Delimited DRF Past Performances (single file format).

Left Click here

User: Select the racetrack and date (enter Username and Password)...

*These files are compressed in ZIP format.*

Track	Dates
Aqueduct	<a href="#">20</a> , <a href="#">19p</a> , <a href="#">18p</a> , <a href="#">17p</a> , <a href="#">16p</a> , <a href="#">13p</a> , <a href="#">12p</a> , <a href="#">11p</a>
Beulah Park	<a href="#">22</a> , <a href="#">21p</a> , <a href="#">19p</a> , <a href="#">18p</a> , <a href="#">16p</a> , <a href="#">15p</a> , <a href="#">14p</a> , <a href="#">12p</a> , <a href="#">11p</a>
Catterick Bridge (UK)	<a href="#">18</a>
Charles Town	<a href="#">23</a> , <a href="#">20p</a> , <a href="#">19p</a> , <a href="#">18p</a> , <a href="#">17p</a> , <a href="#">16p</a> , <a href="#">13p</a> , <a href="#">12p</a> , <a href="#">11p</a>
Delta Downs	<a href="#">24</a> , <a href="#">23p</a> , <a href="#">19p</a> , <a href="#">18p</a> , <a href="#">17p</a> , <a href="#">16p</a> , <a href="#">12p</a> , <a href="#">11p</a>
Gulfstream Park	<a href="#">21</a> , <a href="#">20p</a> , <a href="#">19p</a> , <a href="#">18p</a> , <a href="#">17p</a> , <a href="#">16p</a> , <a href="#">14p</a> , <a href="#">13p</a> , <a href="#">12p</a> , <a href="#">11p</a>
Hawthorne	<a href="#">13p</a> , <a href="#">12p</a> , <a href="#">11p</a>

Left Click here

Download the selected file into your TRACK directory (folder)...

Note: The file you intend to download and save must be going into **SAVE IN: TRACK**.

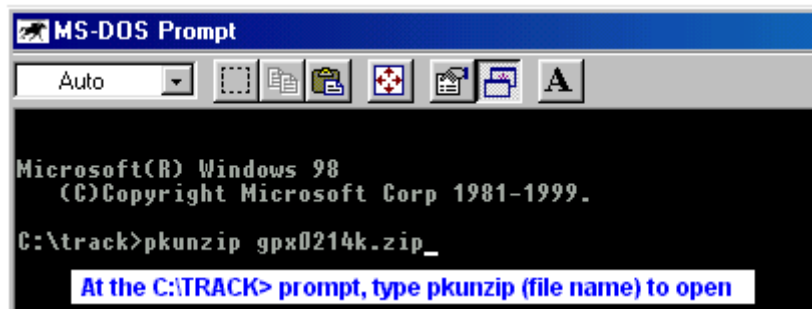
Click "Save" and the Bris ZIP file (the "k" file) will be saved into your TRACK folder.

User: Go to your WATTdos prompt by doing this...



On your Windows Desktop,  
Left Click the WATTdos icon.

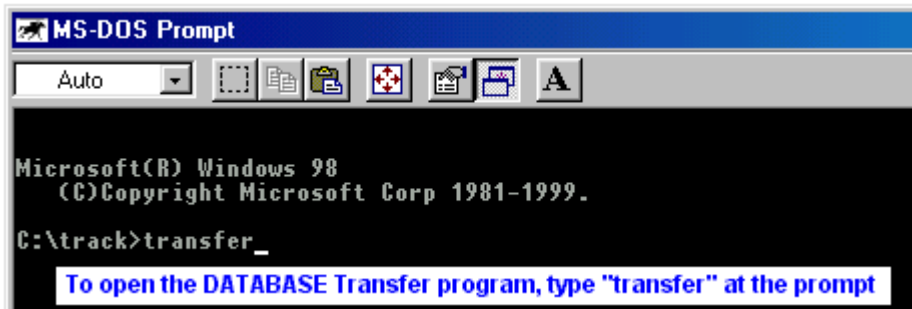
User: Open the compressed BRIS "k" file with this command ...



(Click the ENTER key)

### How to Use the DATABASE Transfer program:

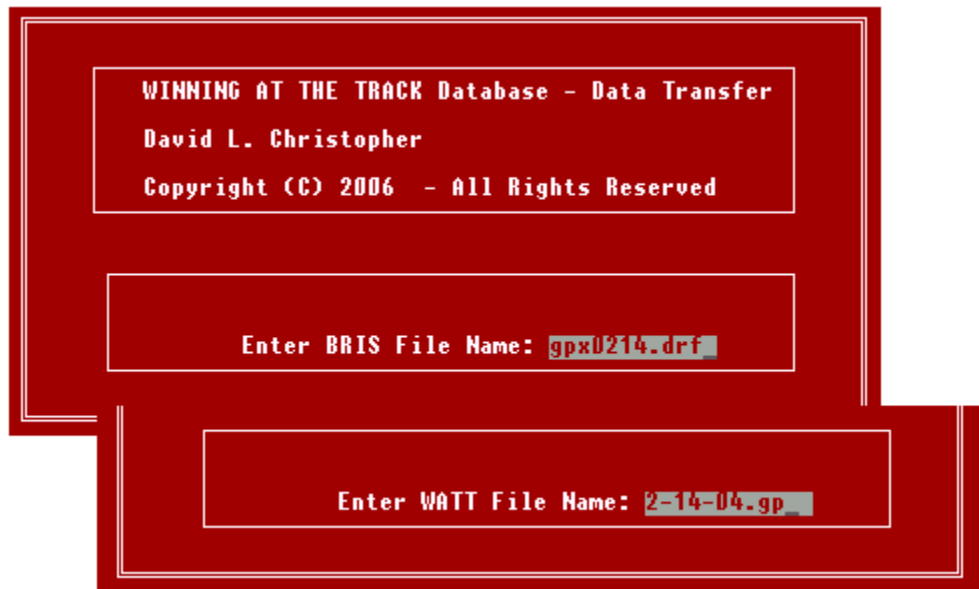
User, NOTE: Before all else, print the DATABASE.doc file and read it thoroughly.



(Click the ENTER key)

User: You enter the Transfer program by answering two questions. First, what is the name of the Bris file (the DRF file). Second, the program asks you to name the new WATT file that you are creating. We suggest you name the new file using the date and a file extension of the racetrack symbol. If you are going to Santa Anita on September 17, 2008, the file name would be 9-17-08.SA.

In this case, we are using a Bris DRF file to create a WATT race file for Gulfstream Park on February 14, 2004 ...



User: Inside the DATABASE Transfer program, follow the DATABASE.doc instructions closely. If you have any additional questions, ask the publisher.

Inside the Transfer program, when it is time to save the new WATT race file, you hit "WATT File Save"...



To quit the program, hit "Q". After leaving the DATABASE Transfer program, enter the WATTdos program (type DESKTOP at the TRACK prompt) and enter the new WATT file that you created (2-14-04.gp).

Inside the WATTdos program, make the finishing touches to your WATT race file and then begin your handicapping.

To learn more about the WATTdos / WATTwin programs, type TUTOR at the TRACK prompt and read the HELP files found in every program. In WATTdos, hit Alt-H whenever you have a question (hit "Q" to return to your original spot). In WATTdos, hit "Esc" and "Q" whenever you want to return to a previous screen.

Need more help? See the lower left corner of the HorseRacingUSA.com home page.